

BUSSEI SCRIPT

2929 Market Street, San Diego, California 92102 E-mail: info@btsd.net Phone: 619-239-0896

VOLUME 81 NO. 1

www.buddhisttemplesandiego.org

MARCH 2021



American -- Buddhists

Rev. Dr. Kenji Akahoshi, Resident Minister

Being an American Buddhist is a proud identity for me. However, 78 years ago, being born an American did not seem to hold much security for me. My family, along with 120,000 people of Japanese descent, were imprisoned without justification, into concentration camps of deplorable conditions. This was a political act. Politics pervades almost all aspects of our lives. Yet, we hear from some that we should not be involved with political matters.

Being Buddhist had even more negative consequences. Rev. Dr. Duncan Williams, relates in his book, American Sutra, that Buddhist clergy, born in Japan (*Issei*), were taken from their families and held in prisons while Christian clergy suffered no similar fate. My father-in-law, Rev. Eiyu Terao, was a Nisei born in Stockton, and so was able to remain with his family and served the Buddhist community in camp Minidoka, Idaho.

The truth was that Japanese-Americans were loyal to America and posed no threat to the country. The lie, which was perpetuated by hatred, greed, and ignorance, enabled anti-Asian sentiment to remove all Japanese-Americans from the west coast. This was racism that was initiated and supported by the government "of the people." A similar condition is occurring now.

The COVID-19 pandemic caused the lock down of businesses and schools since March 2020. At the time, then president Trump called it the China virus or the Kung-flu. This racist label pointed anger toward the Asian community. Again, ¾ of a century later, a lie has caused Asian-Americans to be wrongfully accused of a national threat.

Shamefully, it has been the non-actions of the ex-president that has perpetuated this health crisis to catastrophic levels. Although he admitted to Bob Woodward that he knew the deadly nature of this contagious virus, he ignored the medical advice to wear masks and he actively encouraged others not to do so. By encouraging the opening of businesses too soon and by not providing a national response to the pandemic, the death toll has risen to half a million deaths in less than one year. All of us are at risk because of the spread by unmasked contagious carriers.

We, in the Asian community, are at an additional risk, as the followers of this current lie place the blame of the virus on ethnic reasons, not on scientific facts. Civil authorities and national news reports have verified that violence on Asian-Americans have escalated many-fold during the last 10

months. I have received an email that our own member has been harassed. Verbal and physical abuse have occurred with serious injury and even death. The 4 Noble Truths clearly state that hatred, greed, and ignorance are causes of this suffering.

I feel a responsibility to reiterate a caution to our members and friends to be mindful of this situation. Although most of us are not venturing out much, we do need to be cautious and mindful of our situation. In the SF-Oakland area, younger Asians are forming protective groups to escort elders when they venture out to shop. But the problem is much broader and demands a solution that involves all of us.

It is frightening to know that millions of Americans and congressional representatives and senators have abandoned truth. Issues have been clouded by partisan rhetoric. But the crux of the problem is whether truth is taken as the basis of our reality. As Buddhists, we follow the Buddha's guide to awaken and to verify Truth.

It is true that the Japanese-American community was and is loyal to America. The efforts and sacrifice of the all-Nisei 442nd Combat Regiment and the Nisei interpreters in the Pacific testify to that fact. It is true that the rapid and deadly spread of the corona virus from February to December was a health issue that was not address by a coordinated national response. Communities that ignored the wearing of masks and not being socially distant suffered greatly. Asians were not the cause.

We clearly see that the suffering of millions of Americans was caused by words of untruth. Untruth has led to racial hatred. As Shin Buddhists, we follow the example of the Bodhisattva. We join the Vow of assurance that all beings will awaken from the disease of untruth to the liberation of truth. The signs are clear. Untruth is represented by greed, hatred, and ignorance. Truth is demonstrated by the harmony of interdependence and cooperation.

Every generation has been challenged by the inequalities in life. Our practice of the Nembutsu reminds us that our lives have been made possible by the efforts of others (the Compassion of Amida). Our awakening includes us in the Vow of assurance that all beings be led to truth, which assures us of a life of Wisdom and Compassion. How might each of us make that vow real in our present world?

In This Issue:

Kenji Sensei's Message	1	Donations	5
Calendar, Golf, Activities	2	Shotsuki Hoyo	6
President & BOD	3	Rev Mukojima's Message	7
BWA, Dharma School	4	2021 BOD, BEC, O Higan	8

MARCH CALENDAR

In the best interest for the health and safety of the Sangha and community friends, the Buddhist Temple of San Diego remains closed due to the COVID-19 pandemic.

Religious and social activities will continue to be offered virtually on the temple's Zoom (Z) live and YouTube (YT) channel. The temple welcomes everyone to participate in the virtual activities and share the opportunity with individuals who do not have computer internet access. Here is the schedule for March:

- 3 – Taiko practice, 6:30 p.m. (Z), Buddhism 1-2-3, 7 p.m. (Z)
- 4 – IRC Meeting, 12 noon (Z)
- 6 – Sutra Chanting Shoshinge, 1 p.m. (Z)
Southern District Jr. YBL Religious Retreat, 1 p.m. (Z)
- 7 – Shotsuki Hoyo monthly memorial and Dharma messages: English and Japanese (YT); DS staff meeting, 9 a.m. (Z); Qigong workshop, 9 a.m. (Z); Dharma School, 10 a.m. (Z); BWA meeting, 11 a.m. (Z); Taiko practice, noon (Z)
- 9 – Ways and Means meeting, 7 p.m. (Z)
- 10 – Taiko practice, 6:30 p.m. (Z); Buddhism 1-2-3, 7 p.m. (Z)
- 11 – Board of Directors meeting, 7 p.m. (Z)
- 13 – Sutra Chanting Shoshinge, 1 p.m. (Z);
So. Dist. Jr. YBL Seminar 2, 1 pm (Z); Book Club, 2 p.m. (Z)
- 14 – Dharma message (YT), Qigong, 9 a.m. (Z);
Dharma School, 10 a.m. (Z); Jr. YBA meeting, 11 a.m. (Z);
Sangha Teens meeting, 11 a.m. (Z); Taiko practice, noon (Z)
- 17 – Taiko practice, 6:30 p.m. (Z); Buddhism 1-2-3, 7 p.m. (Z)
- 20 – Sutra chanting Shoshinge, 1 p.m. (Z)
- 21 – **SPRING O HIGAN**. Guest speaker: Rev. Yuki Sugahara, Oregon Buddhist Temple (YT)
Qigong workshop, 9 a.m. (Z); Dharma School, 10 a.m. (Z);
Taiko practice, noon (Z)
- 24 – Taiko practice, 6:30 p.m. (Z); Buddhism 1-2-3, 7 p.m. (Z)
- 25 – Activities Meeting, 7 p.m. (Z)
- 27 – Sutra Chanting Shoshinge, 1 p.m. (Z)
- 28 – Dharma message (YT); Qigong workshop, 9 a.m. (Z);
Dharma School, 10 a.m. (Z); Taiko meeting, noon (Z)
- 31 – Taiko practice, 6:30 p.m. (Z); Buddhism 1-2-3, 7 p.m. (Z)
The Spanish-language Dharma message, presented by Arturo Rubio, will be posted on the temple's YouTube channel.

Office hours: 9 a.m. to 4:30 p.m. Tuesday-Friday. Limited staff coverage on weekends. The temple is closed Mondays.

For more information please call the temple at (619) 239-0896. Leave a message if your call is not answered. Send an email to info@btsd.net or check the website <http://www.buddhisttemplesandiego.org> for updates.

MEMBERSHIP NEWS:

Our Members Are the Best!

Bill Teague, Membership Chair



2021 Renewals are already pouring in. Thank you so much! Over a quarter of our members have already renewed.

Members Only. In late February we enabled the password-protected area for the Members Only section of the Website. If you did not receive an email from me with the password, please let membership chair Bill Teague know at btcomms@cox.net.

We will continue to place special items of interest in this Members only area. Many resources are available behind this password, including information about member status, PDFs of important publications, what the Board is doing for the Temple, and latest news from the BCA.

ACTIVITIES NEWS

The Activities Committee is back in business!

Coming up on April 17 is the fourth Yasukochi Farms drive thru event! We will offer the regular and large CSA box of organic vegetables and fruit as well as their strawberry three packs. In conjunction with the Yasukochi Farms produce, we will have the ever-popular handmade facemasks and Ichiban Bento sale. As mentioned, Ichiban Hillcrest will provide one of their delicious Japanese Bentos for sale and to be picked up as part of the Yasukochi drive thru event. The order form can be found on the Temple website. We recommend ordering online, if at all possible, as submitting and tracking of your order is more efficient. When ordering, please follow all instructions included on the order form to help avoid any errors.

Ichiban Hillcrest has asked to resume our partnership beginning now through August. The way it works is Ichiban Hillcrest will donate 20% of the total cost of your order to the Temple (you will pay the full price listed on the menu, you do not receive a discount). The majority of menu items qualify for the program. Happy hour and drinks are NOT included. When you place your order be sure to mention The Buddhist Temple of San Diego to take advantage of this generous program.

To continue to help with Temple operating costs, we will be introducing other fundraisers and possible partnerships with other restaurants so you can enjoy their delicious food.

In Gassho, Ann and Glenn

FORE! REGISTRATION OPENS FOR 25TH ANNUAL BTSD GOLF TOURNAMENT — EVENT IS JUNE 27

After a one-year absence, the Buddhist Temple of San Diego's golf tournament is back!

Please save the date for the Silver Anniversary event scheduled for Sunday, June 27 at Riverwalk Golf Club in San Diego's Mission Valley.

Last year's tournament was canceled due to the COVID-19 pandemic and will return following special guidelines as mandated by the state of California for area golf courses.

Registration fee is \$115 for men and women, and \$90 for youths 15-years-old and under. Make your checks payable to BTSD. Early registration deadline is April 19. Final deadline is June 7. Space is limited to 60 players. Registration forms have been emailed to many golfers and sponsors.

The tournament format will be a four-person scramble and will accommodate golfers of all skill levels.

In order to comply with COVID-19 regulations, several tournaments traditions are being adjusted.

Players will be asked to check-in 45 minutes prior to their scheduled tee time. Groups will tee-off at 10 minute intervals.

The first group will tee-off at 7 a.m.

The post-tournament luncheon, awards and opportunity drawing gala has been canceled. In its place, golfers will be given a box lunch to take home upon completion of play. Team and individual contest winners will be contacted by email. Opportunity drawing prizes will be limited to gift cards and gift certificates for easy mailing. The drawing is limited to players only.

This year's event will be BTSD's first major fundraiser in over one year. If you wish to consider a monetary donation, sponsorships are available at various levels and indicated on the registration form. You may download the form from the temple's website or call the office and one will be mailed to you.

Thank you for your support and if you have any questions, please contact the tournament committee.

In Gassho,
Ralph Honda, Rich Kaneko and Ron Yagura
2021 Golf Tournament committee

PRESIDENT'S MESSAGE



It's almost a year from when we shut down. Time flies or did it?

For me, I can't believe it's already February. At times, it has been a bit stressful especially with trying to get a vaccine. The website crashed at times and many people were and are frustrated trying to get an appointment.

One good thing is people want to take the vaccine but unfortunately the supply is not enough. Sometimes all the COVID-19 and vaccine information can be overwhelming but I know if we stay the course for just a few more months, we will be able to gather again.

Thank you to BWA reps Junko, Laurine, Mani and Sue M. for calling their groups to make sure the Keiro Kai members were getting the vaccines or to offer help with scheduling. Also, thanks to Karen Okuhara for helping me call on the other Temple Keiro Kai members.

Thank you for all those that attended the General Meeting on January 31. We were able to conduct the business of the Board of Directors with a quorum. We missed having a lunch together but it was nice to see everyone via zoom. Special thanks to the members of the Board of Directors including the affiliated group representatives for your participation throughout the year and for your outstanding reports. If anyone would like a packet or a particular report, please contact the office. It is truly an honor for me to volunteer with such generous and dedicated people.

Appreciation to our Administrative Assistant Linda with assistance from Ken Muraoka for making the calendar that was given to our Keiro Kai members. The calendar was an idea from Linda, pictures from various photographers and it was made with love. Thanks to Kenji Sensei and Ms. Karen for delivering the calendars with help from others.

If anyone is driving around the Chula Vista area and want to see a new landscaped front yard, please see Kenji Sensei and Karen's home. Thank you to Ken and the landscapers for doing a great job. It may entice the Akahoshi's to stay here?

I would like to invite you to join some workshops put on by the BCA and open to everyone.

On Saturday, February 27, there is a Dharmathon with the theme Experience the Nembutsu and a Recognition of Retired Ministers. On Sunday, February 28' the BCA has the Annual Eitaikyo Perpetual Memorial Service with Guest Speaker Rev. Kodo Umezu and followed by BCA closing program Dharma Forward featuring Regina Boone and Rev. Marvin Harada, Bishop of the BCA.

See the links on our website. If you see this after the event has happened, we hope to have the link to the video's to view at a later date.

In closing, we want to give our deepest gratitude to all that continue to donate to the temple. We are grateful for your generosity and thoughtfulness. Be safe and continue to keep in touch with one another.

If you know of someone in our temple that needs support, please reach out to us. Call the temple (619) 239-0896 or e-mail at info@btsd.net.

Check on our website for updates at <http://www.buddhisttemplesandiego.org/>

In Gassho,

LuAnn Lee

BOARD OF DIRECTORS HIGHLIGHTS

The Board of Directors met on February 11:

1. The Board of Directors was installed by Rev. Akahoshi for the 2021 year.
2. The Executive Board positions were approved by the Board.
 - LuAnn Lee, President
 - Michael Kinoshita, 1st Vice President (Ways & Means)
 - Glenn Torio and Ann Ong, 2nd Vice President (Activities)
 - Bill Teague, 3rd Vice President (Membership)
 - Aki Tomiyama, Treasurer
 - Nancy Martinez, Recording Secretary
3. Laurine Ota, our Social Well-Care Coordinator was nominated, accepted and approved as a new Board Member for the 2021-2023 term.
4. The list of Standing Committees and Committee chairs were reviewed.
5. Condolences to Laura Yoshida on the passing of her mother, and to the families of Aiko Valerie and Eiko Eller.
6. Affiliated Organizations. Standing Committees and Ad-Hoc Committees provided updates on their activities.
7. Rev. Akahoshi encourages all to take advantage of the many webinars, workshops and trainings available on-line.

GENERAL MEMBERSHIP MEETING REPORT (Meeting held on January 31)

1. The slate of candidates for the 2021-2023 Board of Directors term was approved.
2. Financials for 2020 were reviewed. Even with limited fundraising and no on-site services since early March, the fiscal year ended positively thanks to the generosity of the Sangha and friends of the temple.
3. The 2021 operating and improvements budgets were approved.
4. Temple committees and affiliated organizations provided reports on their activities for the year. Dedicated volunteers and staff kept needed communication, outreach, and operations running.
5. Copies of the General Membership packet and minutes are available upon request..

BWA NEWS

Because the availability of the vaccine seemed to have come to a halt in recent past, many of us were concerned about not getting our second dose which would pretty much ensure our safety against getting this dreaded disease. With the help of our Temple friends, my husband and I were able to get our 2nd inoculation through Sharp at Grossmont Shopping Center. The side effects were more pronounced for us in that we felt chills, achiness, and headaches. The soreness in the deltoid was more pronounced for me. After about three days, the symptoms started to subside, so we were able to conduct our lives as we normally do. We know, however, that we must continue to wear masks, maintain social distancing, and have good hand hygiene even with this vaccination.

The activities of the BWA have obviously been curtailed due to the pandemic, but we still try to get together through Zoom. Qigong, Book Club, our monthly meetings, Southern District BWA meetings and, of course, our Temple's special services have all been conducted through Zoom. I feel grateful that we can still see and talk to each other in this manner. It certainly has helped me feel less isolated and more in touch with the Sangha.

In the last Kaiho, I mentioned that Karen Yamada Amos was our new treasurer. However, the position has since changed, and at this time, we are in search of someone who will take over. If you are interested to do this, please let me know. Also, just a reminder that \$15 membership dues for 2021 are now being accepted. Thank you for your donation.

I want to thank Bill Teague in helping me navigate and add articles to our Temple website. Without his assistance, I would not have been able to do so for BWA. I can always depend on his help, because whenever, I am stuck on something, he emails me back instructions. He has made it possible for our Temple to have our weekly services presented online through YouTube. Reverend Akahoshi has often mentioned how important and valuable he has been in maintaining the website and setting up the video services among all the other responsibilities he has taken on to support the Temple. Thank you, Bill. Your Dana in your commitment and service to our Temple is deeply appreciated.

Gassho,
Mani Ryan



SCRIP NEWS

The scrip program has turned into quite a collaboration. I have to give a lot of thanks and appreciation to Nancy and Linda who keep me informed about the status of the gift cards so that I can continue to send in orders. It is amazing to me that sometimes our numbers match and sometimes they don't. Also, thanks to Aki who continues to send out the monthly statements. All of you are greatly appreciated for all that you are doing!

Gift cards are available. You can see what Great Lakes Scrip Center has to offer by going to their website. You don't have to sign in. You can just go to the bottom of the page and click on retailer list and it will open up to show you all the gift cards that they have to offer.

Hope this month finds you healthy, safe, safe, and well!! Take care and remember that we are all in this together! Wear your mask and get vaccinated when it's your turn!

DHARMA SCHOOL NEWS

During February, Dharma School continued weekly mini-services on Sundays via Zoom. Each class takes turns chairing the service each week and members from the Sangha or students take turns giving dharma talks and lead chanting. On Feb. 21 we joined the temple in observing Nirvana Day, the passing of Sakyamuni Buddha. Following the Nirvana Day service, students went into a breakout room and did a community service project, called *Project Linus*. *Project Linus* is an organization that provides new blankets to children in need of warmth, security and comfort. About a dozen families took part and made blankets. Thank you is extended to Nancy Martinez for organizing this special project.

We are helping the Southern District prepare for the upcoming FDSTL Conference on April 24. Some BTSD teachers and staff members are involved in planning and will conduct workshops. The conference will be held via Zoom.

We will observe Spring O Higan on March 21. Ralph Honda will be giving the Dharma talk for this special service.

SANGHA TEENS

On February 14, Valentine's Day, we got together after the Dharma School service and had a spam musubi making activity on Zoom. Arturo Rubio, Paulina Covarrubias, Tabo Isakari and I followed the step-by-step instructions for making the yummy musubi with Mrs. Avis Honda and Mrs. Lorena Covarrubias. Our parents helped with the cutting and cooking the spam and then we filled the mold with spam, rice, and nori (seaweed). It was delicious. Yum! We shared our snacks with our families. We are very grateful to Ms. Avis and Mrs. Lorena for delivering the musubi kits to us. We look forward to our next activity.

Gassho,
Sage Seymour, Sangha Teens Activities Chairperson

NEW ON OUR WEBSITE

By Bill Teague, Web Editor

Latest Website expansions.

Videos. Now we have menu sections for Japanese Dharma (日本語法話), Spanish Dharma (*Budhismo en Español*), and **Dharma School Service** videos.

Member Site. See the article elsewhere in this issue of the newsletter, but there is now a Members only section. If you need the password for this section, please email or call the office. For everyone there are PDFs of our service book and more resources.

Tentative Calendars. This is a crazy time for planning, but the Temple has allowed us to post its monthly calendars for the rest of 2021. Go to **News** and choose **Calendars**. Linda Redenbaugh updates the listing of events each month in the center and on the edges are the grid calendars with tentative dates.

Let Us Know. We welcome suggestions and your questions for the Website. Just contact the Temple.

DONATIONS

The Buddhist Temple of San Diego is grateful to the following individuals for their recent donations to the Temple and its affiliated organizations. "IMO" means "In memory of." For a corrections or questions, please contact the temple office at 619-239-0896 or info@btsd.net.

BTSD

Ryan, Mani
Nakagiri, Karen - Thank you
for the Dharma messages
Becker, Mary
Higa, Roy
Plunkett, Gloria - Grateful for
Rev. Akahoshi's Wed. class
Alpine, John Mac
Kashima, Sara - 25th
Anniversary Memorial
IMO Tets Kashima
Hidinger, Holly & Ron
Yamamoto, Koichi & Joyce
IMO Chieko Moriyama
IMO Roy Yonekura
Uyeji, Masako
IMO S. Kodama
IMO E. Asamen
Yanagihara, Sumiko
Ochi-Fontanott, Janet
Cross, Joe
IMO Trace & Mildred's
Daughter
Yokotobi, Fusako
Gladsjo, Julie
Sato, Steve
Honda, Mikiye
IMO Ben Honda
Pop's, Inc.
Himaka, Norman & Kathy
IMO Osao Himaka
IMO Sakiko Kada
Morinaka, Ron - from family
Olds, Vivian - Thank you
Enjoy the newsletters
Tomiya, Alan
IMO Roy Yonekura
Bussei Script
Kawasaki, Mildred & Trace
Moribe, Lee & Susan
Special Services
Hashiguchi, John & Tsune -
Calendar
John's 88th Birthday
Thiemann, Peter A - In appreci-
ation- Kenji Sensei, B1-2-3
Shigehara, Wilbur & Janice -
Calendar
Yamanishi, Miyoko - Calendar

BODHI DAY SERVICE

Hidinger, Holly
Hill, Miyo
Ohara, Ann

BUILDING IMPROVEMENTS

Ochi-Fontanott, Janet -
Solar Panel Project
Hill, Miyo
Kaneshiro, Gale

COVID-19

Sasaki, Brian & Lorin

DHARMA SCHOOL

Voorhies, Ruth
Yonekura, Susan
Okuhara, Roy & Karen
Otsuji, Dennis & Elaine
Nakamura, Jake K. & Patty
Kawamoto, Mitsuko
Yanagihara, Sumiko

FLORAL OFFERING

Okuhara, Roy & Karen
Otsuji, Dennis & Elaine
Nakamura, Jake K. & Patty
Yanagihara, Sumiko

GEN MAINTENANCE

Okuhara, Roy & Karen
Otsuji, Dennis & Elaine
Nakamura, Jake K. & Patty
Yanagihara, Sumiko
Tanaka, Kelvin

GOLF

Hidinger, Holly
Hill, Miyo
Ohara, Ann

HO-ON-KO SERVICE

Graeber, Kiku
Okuhara, Roy & Karen
Yanagihara, Sumiko
Torio, Betty
Ogasawara, Michiko
Tsuji, Masako
Estes, Toshiye
Tsuneyoshi, Motoo
Tomiya, Steve & Aki
Hashiguchi, John & Tsune
Spears, Margo
Tsukamoto, Wayne
Kawasaki, Kiyoshi & Aileen
Honda, Mikiye
Honda, Ralph & Avis
Moncrief, Mayko
Gladsjo, Julie
Nakamura, Jake K & Patty
Yamamoto, Jane
Hagio, Quimico
Tomiya, Sayoko
Kida, Katsumi
Hidinger, Holly
Kawasaki, Mildred & Trace
D'Orsi, Ruby
Hill, Miyo
Kawamoto, Mitsuko
Ohara, Ann

Spring O Higan

Ryan, Mani and
Yamaguchi, Laura
Voorhies, Ruth

MAP

Okuhara, Roy & Karen
Otsuji, Dennis & Elaine
Nakamura, Jake K. & Patty
Yanagihara, Sumiko
Hashiguchi, John & Tsune
Torio, Betty
Alroy, Evelyn
Yanagihara, Tom Masaru &
Colleen
Ochi, K Kay
Yamamoto, Jane
Kawasaki, Kiyoshi & Aileen
Masumoto, Chiyoko
Sugiyama, Chiyeko

MEMBERSHIP

Williams, Yukari
Shigehara, Wilbur & Janice
Honda, Ralph & Avis
Okuhara, Roy & Karen
Nakamura, Jake K. & Patty
Kinoshita, Michael & Yasuko
Otsuji, Dennis & Elaine
Bradford, Qamar A.
Ohara, Fumiko
Hotta, JoAnn Katsuda & Eugene
Kawamoto, Mitsuko
Yanagihara, Sumiko

NIRVANA DAY

Sumida, Floyd & Kaytee
Shigehara, Wilbur & Janice
Honda, Ralph & Avis
Hendrix, Hiroko
Suyenaga, Irene
Jones, Mikako
Yamamoto, Jane
Masumoto, Chiyoko
Nogata, Yuriko & Sumihiro
Moncrief, Mayko
Otsuji, Dennis & Elaine
Kodama, Jay & family
Hashiguchi, John & Tsune
Tanaka, Kelvin
Sugiyama, Yukiko
Graeber, Kiku

Kuwada, Howard Kanji &
Kaneko
Estes, Toshiye
Kashima, Jeanie
Yanagihara, Sumiko

SCHOLARSHIP FUND

Okuhara, Roy & Karen
Otsuji, Dennis & Elaine
Nakamura, Jake K. & Patty
Yanagihara, Sumiko

SHOTSUKI HOYO

Yamamoto, Jane
IMO George Yamamoto
Shigehara, Wilbur & Janice
Ohara, Fumiko - February
Graeber, Kiku - January
IMO Kiyoko Santohigashi
Estes, Toshiye
IMO Patsy Yanagihara
Yanagihara, Sumiko - January
IMO Reno Yanagihara
IMO Patsy Yanagihara
IMO Mariko Tanizaki
IMO Rose Watamura
Masumoto, Chiyoko
IMO Yuki Masumoto
Yagura, Ronald
IMO Iwao Yagura
Terusaki, Steven
IMO Yuri Terusaki
Honda, Ralph & Avis - February
Aoyama, K. Alice
IMO Satoshi Jack Takagi
IMO Robert M. Sakiyabu
Yamamoto, Jane
IMO Iwao Yagura

Correction for February donations:

Sugiyama, Yukiko -
Dharma School
Ho Onko Service
MAP
Oseibo

SOMETHING NEW:

Thanks to a suggestion
from a sangha member, the
temple now has Kodan Thank
You Cards. We plan to have a
few on hand. If you wish, you
can add your family's name to the sentiment inside,
and have it printed on cream or white. Please know
time frames may differ depending on availability.
Fifty cents each (shipping would be extra).





MARCH SHOTSUKI LIST

The monthly memorial service will be posted to the temple's YouTube channel on Sunday, March 7. Families and friends of anyone who passed away in March are urged to view the video, burn incense at your home O Butsudan and Gassho in memory of your deceased loved ones. Please share the video and Dharma messages with family members and friends who do not have access to the internet. If you find an error, wish to add a name to the list or have questions on accessing the YouTube video, please contact the temple at (619) 239-0896 or email info@btsd.net Gassho.

DECEASED

FAMILY MEMBER

Tsugiyō Ishisaki (3-16-1913)..... Florence Koga
 Tomiye Torimaru (3-18-1923) Torimaru Family
 Sadao Kinoshita (3-28-1923) Kinoshita Family
 Senkichi Yanagihara (3-12-1924) Yanagihara Family
 Iwakichi Okumura (3-23-1934)..... Yamashita Family
 Matsu Yamanishi (3-26-1945)..... Miyoko Yamanishi
 Yonekichi Tsubakihara (3-27-1959) Kent Tsubakihara
 Mizuno Nakano (3-28-1959) Minako Nakano
 Shina Shindo (3-28-1959)Friends
 Tokumatsu Shiosaki (3-14-1960) Iwata Family
 Yoshigoro Mamiya (3-8-1961)David Kawamoto
 Kura Hashimoto (3-16-1961) Kuko Mayeda
 Dennis Suyenaga (3-24-1961) Suyenaga Family
 Sawa Yamanishi (3-18-1962) Miyoko Yamanishi
 Taiki Ikemi (3-22-1964) Charles Ikemi
 Ichinosuke Kiyono (3-7-1965) Norman Kiyono
 Tsune Haseyama (3-5-1966) Noboru Haseyama
 Fude Hirai (3-9-1967)..... Dorothy Mansfield
 Shuji Kaneko (3-17-1967) Kaneko Family
 Zenkichi Iwashita (3-8-1968)..... Iwashita Family
 Yoshito Yamamoto (3-9-1969) Kanji Kuwada
 Akira Date (3-18-1969) Shirley Umekubo
 Fusamatsu Morimoto (3-19-1971) Morimoto Family
 Motono Oto (3-22-1972) Oto Family
 Matsu Higuchi (3-26-1972) Yasuko Higuchi
 Shina Nishiuye (3-18-1975) Yoshiro Nishiuye
 Shimeno Nabeta (3-30-1975) Joyce Teague
 Shunzo Sakamoto (3-29-1976) Amano Family
 Buyemon Ohara (3-1-1977) Ohara Family
 Roy Yamada (3-10-1977) Kimi Yamada
 Teru Kiyono (3-27-1978)Kiyono Family
 Kiyotaro Osaki (3-13-1979) Sayoko Tomiyama
 Yuku Hosaka (3-20-1980) Hosaka Family
 Masaaki Tanizaki (3-25-1981) Friends
 Hanano Matsui (3-11-1983)Imori & Curtis Family
 Tets Tachiki (3-18-1983) Tachiki Family
 Masaru Yanagihara (3-9-1984)..... Yanagihara Family
 Suna Torio (3-24-1985) Betty Torio
 Haruhiko Otsuji (3-3-1986) Otsuji Family
 Sukeichi Yamada (3-16-1986) Keisuke Yamada

DECEASED

FAMILY MEMBER

Grace Hosaka (3-6-1987) Hosaka Family
 Kimi Terada (3-24-1987) Etsuko Smith
 Shiro Takahashi (3-19-1988) Sugioka Family
 Susumu Yagi (3-23-1989).....Yagi Family
 Zenpachi Kubota (3-28-1989)..... Chiyoe Kubota
 Tsune Yamasaki Atsuko Thomas
 Hideo B. Watamura (3-10-1990) Elizabeth Takasaki
 Hisaji Taniguchi (3-15-1993) Robert Taniguchi
 Miyuki Takanashi (3-31-1994) Minoru Takanashi
 Thomas Yonekura (3-1-1995)Yonekura Family
 Haruki Koba (3-25-1995) Duane Koba
 Mieko Holt (3-29-1995) Joe Holt
 Masaru Niwata (3-29-1995) Joe Niwata
 Shoichi Nomura (3-28-1997) Kiyoko Nomura
 Chisato Kuroye (3-18-1998) Roy Kuroye
 Kiyō Kawasaki (3-22-1998) Trace Kawasaki
 Rosie Yamada (3-4-2001) Laurence Yamada
 Fumie A. Martin (3-23-2001) Tazuno Lowell
 Masahito Iwanaga (3-6-2002) Masami Iwanaga
 Kiyoko Hazel Baker (3-10-2002) Miyo Tanaka
 Michael S. Kawamoto (3-13-2003)Kawamoto Family
 Misao Kawasaki (3-5-2005)Kawasaki Family
 Mark Isao Kasubuchi (3-27-2005) Naoye Kasubuchi
 Rui Nemoto (3-11-2007) Fumiko Hayashi
 Fred Nabeta (3-14-2007) Joyce Teague
 Sam Amano (3-6-2008) Takeko Amano
 Yoshiko Kawato (3-28-2009) Nancy Nakatani
 Susumu Kawato (3-22-2010) Nancy Nakatani
 Tadami Maruyama (3-12-2011) Michi Maruyama
 Katie Tomoe Krause (3-28-2011) Pamela Lopez
 Shizuko Tsukamoto (3-3-2012) Wayne Tsukamoto
 Mary Haruko Yagura (3-5-2013) Ron Yagura
 Ben Shizuto Sekishiro (3-30-2013) Victor Sekishiro
 Bruce Riyou Moriyama (3-24-2014) Moriyama Family
 Gilbert Shuji Wakisaka (3-27-2015)..... Gail Susan Wakisaka
 Tohoru Hidutsu Shimizu (3-1-2016).....Paula Shimizu
 Richard Iwao Ito Sr. (3-21-2016).....Richard Ito
 Ayako Otsuji (3-27-2017).....Otsuji Family
 Emiko Ishisaki (3-12-19).....Florence Koga

MEMORIAL SERVICES

MEMORIAL SERVICES allow us to pay homage to loved ones who have passed away. In our Jodo Shinshu tradition, family members hold a service at certain intervals following a relative's death to express gratitude for and acknowledge their continuing influence in our lives. If you wish to schedule a memorial service for a loved one, please call during weekly office hours.

2021 is the memorial year for those who passed away in:

1st Year Memorial	2020	13th Year Memorial	2009	27th Year Memorial	1995
3rd Year Memorial	2019	17th Year Memorial	2005	33rd Year Memorial	1989
7th Year Memorial	2015	25th Year Memorial	1997	50th Year Memorial	1972

マウンテンビューー仏教会「回向」 二〇二二年三月法話

― 撮め取って捨てず ―

駐在開教使 向嶋裕史

今月、沿岸教区の仏教青年会大会が開催されます。今年の大会はコロナ禍の影響を受けてオンラインでの開催となります。昨年からは毎月、準備委員会会議を開き、限られた条件の中でどのようにオンラインでの大会を有意義なものにしていくかを真剣に話し合ってきました。どんな不遇な状況におかれても、不平を言わず各自責任をもって準備を進めている子供達の直向きな姿を見て大きな感銘を受けました。

今大会のテーマは、デイズニーの「トイストーリー4」という映画の主題歌、「君には僕という友達がいるじゃないか」となっています。このコロナ禍で深刻化する社会的孤立を、友人との繋がりを感ずることで乗り越えていくことをオンラインを通して教えてくれそうです。このテーマが決まってから、自宅で家族とこの映画を楽しんだのですが、大変興味深いシーンがありました。それは主人公のウッディがフォークーキーに示した深い友情です。

フォークーキーは、ボニーが先割れスプーンでつくった手作りおもちゃで、ボニーの一番のお気に入りです。しかし、使い捨ての先割れスプーンで作られたフォークーキーは自分のことを「ゴミだ」と思い込んで、自らゴミ箱に飛び込みます。そんな突拍子もない行動を見かねてウッディはフォークーキーをゴミ箱から救出しますが、フォークーキーはウッディが目を離す度に「僕はおもちゃじゃない」といつて何度もゴミ箱に逃げ込みます。それを何度も繰り返すフォークーキーですが、ウッディはそんなフォークーキーを決して見捨てることなく、ボニーに必要とされてい

る存在であること、そして、おもちゃとしての価値を見出すようフォークーキーを励まし続けます。たとえそれほどフォークーキーが逃げようともウッディは諦めず追いかけるのです。

このシーンを見ていた時、ふと阿弥陀仏の「撮取不捨」の利益が私の頭をよぎりました。その利益は、生きとし生けるものを慈悲の光の中に撮め取り、決して見捨てることのない阿弥陀仏のはたらきをいいます。

妙好人として大変有名な庄松同行に大変面白いお話があります。ある日あるお寺の住職が庄松に「撮取不捨とは如何なるはたらきじゃ？」と尋ねました。すると、庄松はいきなり立ち上がり、両手を広げて「それはこういうことじゃー」と叫びながら、住職に掴みかかろうとしました。驚いた住職は、難しい質問をしたことで庄松が取り乱したと思い、その場から逃げ出しました。しかし、庄松は両手を大きく広げたまま、住職の後を全速で追いかけます。境内のどこを逃げても庄松は追いかけてくるので、怖くなった住職は本堂奥にある行燈部屋へ逃げ込み身を潜めました。「やれやれ、庄松に難しいことを聞いてはならん」と後悔している、突然部屋の戸が開き、庄松が大声で「撮取不捨とはこれなり」といって住職に抱き着きました。逃げて逃げて逃げ回る私を決して見捨てることなく追いかけて、ついに抱きとられるのが阿弥陀仏の撮取不捨です。住職はその阿弥陀仏のはたらきが、今抱き着いて離そうとしない庄松の姿と重なって見え、大いに喜ばれたというお話です。

私達は煩惱具足の凡夫です。物事が思い通りにならなかったり、面白くないことがあったりすると、すぐ腹を立て、世の中を否定的に見てしまいます。ましてや、自分が思っていた以上の力を出せなかったり、誰かの期待に応えられなかったりすると、自分の悪い面ばかりしか見えなくなり、自信を失ってしまいます。その結果、自分自身を嫌いになり、自分の人生を「ゴミ」のようにどうにでもなってしまうと思うことさえあります。しかし、阿弥陀仏は自己否定をするこのような私を

も決して見捨てることなく、慈悲の光の中に私達を包み込んで下さっているのです。たとえ煩惱に苛まれて報恩感謝の念仏を称えなくても、阿弥陀仏から背を向けるように逃げ続けても、阿弥陀仏はそんな私達をどこまでも追いかけて必ず撮め取って下さいます。そして一度つかまえたなら、決して見捨てないのです。

そのような阿弥陀仏のはたらきとウッディのフォークーキーを見捨てない友情が重なって見えませんか？ウッディは何度もゴミ箱に飛び込むフォークーキーを救い出しました。そしてフォークーキーがボニーに必要とされているおもちゃであることを誇りに思い、自分の価値を見出すよう友人として励まし続けました。

人生に於いてウッディのような友人を持つことはとても大切なことです。なぜならそのような友情は私達の心に人生の荒波に向かって進む勇氣と希望をもたらしてくれます。友人の存在は阿弥陀仏の慈悲のようによって、私達は自分自身に大きな価値を見出し、どのような人生の壁をも力強く、自信をもって乗り越えていくことができるのです。

お釈迦さまは、『大無量寿経』の中で「法を聞きよよく忘れず、見て敬い得て大きに慶ばば、すなわち我が善き親友なり」と念仏のみ教えを喜ぶ私達を善き友であるとおっしゃっておられます。そして、阿弥陀仏の慈悲に照らされて念仏に生きる私達は皆、かけがえない法友です。阿弥陀仏の撮取不捨のはたらきのもと、お釈迦さまを始め、多くの法友に恵まれて生かされている人生に感謝の念を忘れてはいけません。お釈迦さまは私達に向かって「君には僕という友達がいるじゃないか」と呼び掛け、いつも寄り添って下さっておられます。仏書のメンバー達には、どんなことがあっても見捨てないという阿弥陀仏の「撮取不捨」のはたらきと、お釈迦さまの「友よ」という力強い呼び声に導かれながら、大きな安らぎの中、かけがえのない法友と共に仏教大会を有意義なものにしていただきたと切に願っています。

BUDDHIST EDUCATION OPPORTUNITIES IN MARCH

We continue the use of tools like video and Zoom to continue Buddhist education during the pandemic.

Video We continue to post Temple videos on the Temple Website, YouTube, and increasingly on the Temple Facebook page. These postings increase the reach of the Dharma and viewership continues to grow.

Zoom is our primary method now of offering live interaction. Opportunities for live interaction include:

Occasional Special Services. Last month's combined BWA Memorial and Nirvana Day services is a good example.

BTSD Dharma School. Each Sunday our Dharma School students lead readings and chanting, and host most mini services. Each month there is a major service led by Rev. Laverne Imori or Rev. Maribeth Smith. This not just for kids! It is inspiring to attend these services. If you would like to attend these live Sunday services, please contact the Temple so you can receive an invitation to join. (We promise to review each request carefully. A short survey is required.)

Buddhism 1-2-3. Each Wednesday night at 7 p.m. we host this open-ended discussion class led by **Kenji Sensei** for most sessions. The virtual nature of this meeting has allowed attendance to broaden across the country (California, Hawaii, Pennsylvania, and Utah). To learn more contact the Temple or visit the Temple's website homepage and scroll down to click on Buddhism 1-2-3.

Guest Speaker in March

Join us in welcoming our guest for Spring Ohigan on March 21, **Rev. Yuki Sugahara**, resident minister of the Oregon Buddhist Temple.

Rev. Sugahara is originally from Shimane Prefecture located just north of Hiroshima. He comes from a temple family on both his father's (*Kōrinji*) and mother's (*Gokurakuji*) side. He lived in the United States as a Junior in high school in Rochester, New York (under the Rotary Club exchange student program). Serving as a *Kiyoshi* minister in Japan since 2002, he returned to the United States in 2009, and under the International Ministerial Orientation Program at the Jodo Shinshu Center in Berkeley, California. In 2011 he was assigned to the Buddhist Church of Florin and has been serving the Oregon Buddhist Temple since 2017.



Interesting Facts. He plays bass guitar (earlier he played with the rock group Jelly Belly) and (before the pandemic) taught *Ying Jow Pai* (Eagle Claw School) Kung Fu to Dharma School students in a weekly class.

Since the start of the pandemic, Sugahara Sensei live-streams daily morning services at 8 a.m. and has posted videos, including series on the Letters on Rennyō and Shinran's *Jodo Wasan*, *Koso Wasan*, and now in process, *Shozomatsu Wasan*. To see these videos visit the Oregon Buddhist Temple's YouTube channel.

2021 BOARD OF DIRECTORS

ELECTED POSITIONS

PRESIDENT - LuAnn Lee

1st VICE PRESIDENT (Ways & Means) - Michael Kinoshita

2nd VICE PRESIDENT (Activities) - Glenn Torio

Ann Ong - Assistant

3rd VICE PRESIDENT (Membership) - Bill Teague

TREASURER (Controller - Reconciliation) - Akie Tomiyama

RECORDING SECRETARY - Nancy Martinez

COMMITTEE POSITIONS

Corresponding Secretary - Karen Tom

Assistant Treasurer - Glenn Negoro

Assistant Treasurer (Donations) - Nancy Martinez

BEC - Bill Teague

BINGO - Qamar Bradford, Ralph Honda

Building & Improvements - Michael Kinoshita,
Nancy Martinez

Eitaikyo/Endowment/Investments - Roy Okuhara

IRC - Kaytee Sumida

Ministerial Affairs - Ralph Honda

Scholarship - Lisa Umekubo/Jamie Shimizu

Scouting - Ken Muraoka (Laverne Imori)

Social Welfare - Laurine Ota

Technology - Tim Kajita

Temple Affairs - LuAnn Lee

Temple Operations - Ralph Honda

Director at Large - Kimberly Kruse

Director at Large - Gregg Yonekura

Director at Large - Carol Baker

Director at Large - Laura Yoshida

Ex-Officio - Glenn Torio

Ministerial Advisor - Rev. Dr. Kenji Akahoshi

ORGANIZATIONS

BWA - Mani Ryan, Sue Moribe

Dharma School - Lisa Umekubo

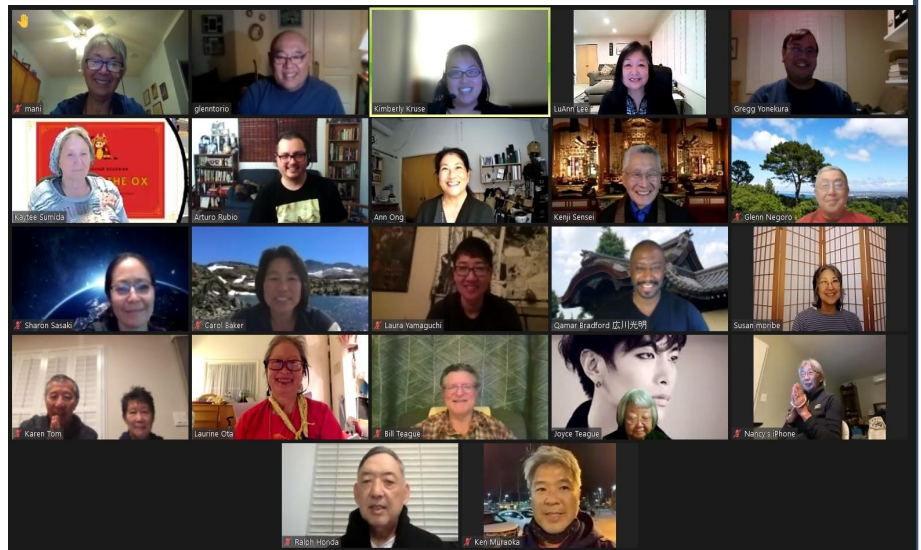
ABA - Ralph Honda

Jr. YBA - Ken Muraoka, Sharyn Kang

(Jenna Sasaki, Zoe Yamamoto)

Taiko - Laura Yoshida/Laura Yamamoto

Sangha Teens - Avis Honda, Lorena Covarrubias



Yasukochi Farms CSA Box & Ichiban Bento Fundraiser

Pick-up order: Saturday, April 17, 2021, 11:00am-1:00pm,
Buddhist Temple of San Diego, drive through

Order & Payment due: Thursday, April 1, 2021

Payment options: PayPal, credit card or check



*Items in CSA Box and Bento may differ from those pictured. Strawberries will be as pictured.

In each CSA box, you can expect:

- A box of farm fresh produce grown using responsible farming methods.
- Most products grown using organic farming methods when possible. All products are grown by responsible food and safety conscious farmers.
- The majority of the freshly picked produce is grown by Yasukochi Family Farms located in Oceanside and other local partner growers. Staples may be supplemented as needed.
- Boxes are catered to each season and will be given a variety of handpicked produce.
- Each Box will contain 11-15 different produce items.

Please submit orders online (strongly encouraged for accuracy of orders) at the following link by Thursday, April 1st, 2021.: <https://forms.gle/q8sCECM3B5Qk2Xo19>

Make payment via PayPal.Me at the following link: https://paypal.me/buddhisttemplesd?locale.x=en_US or mail check to Buddhist Temple of San Diego, 2929 Market Street, San Diego, CA 92102. We can match your check up to the online order submitted.

Or send this completed form and payment to the "Buddhist Temple of San Diego, Attn: Yasukochi Farms", 2929 Market St., San Diego, CA 92102. **Must be received by April 1, 2021.**

Bentos are specially prepared by Ichiban Hillcrest for this event.

Percentage of proceeds from this fundraiser benefits the Buddhist Temple of San Diego's General Fund, which allows us to continue our programs and keep our doors open. Thank you for your participation.

Please contact Ann Ong (fundraisersbtsd@gmail.com) with any questions regarding order or payment.

Name _____ Date _____

Email Address _____ Phone #: _____

<u>Item</u>	<u>Cost</u>	<u>Quantity (enter #)</u>	<u>Total</u>
CSA Regular Box (Suggested for 1-3 people)	\$25.00	_____	\$ _____
CSA Jumbo Box (Suggested for 4-6 people)	\$35.00	_____	\$ _____
Strawberries (3-pk)	\$10.00	_____	\$ _____
Ichiban Hillcrest Bento: Regular	\$18.00	_____	\$ _____
Vegetarian	\$18.00	_____	\$ _____
Cloth Face Mask Several fabric choices on pick-up	\$5.00	_____	\$ _____
Total order			\$ _____

If you prefer us to manually run your credit or debit card, please complete this authorization form.

Mastercard Visa AMEX. Acct # _____ Expires (MM/YY) ___/___

Billing Address: _____ ZIP _____

Payor's Authorized Signature Required _____

Yasukochi Farms has agreed to donate a portion of the proceeds of any orders placed directly with them on their website and delivered to your home. Please enter "Buddhist Temple of San Diego" in the Notes section when ordering online.: <https://www.yasukochifamilyfarmsoceanside.com/>

Ichiban Hillcrest has also agreed to donate a portion of the proceeds of orders from the restaurant, through August 2021, for any dine-in or to-go orders, for almost its entire menu (except for alcohol, Happy Hour, or sushi items). You must reference "Buddhist Temple of San Diego" when ordering items directly for the Temple to receive the donation.